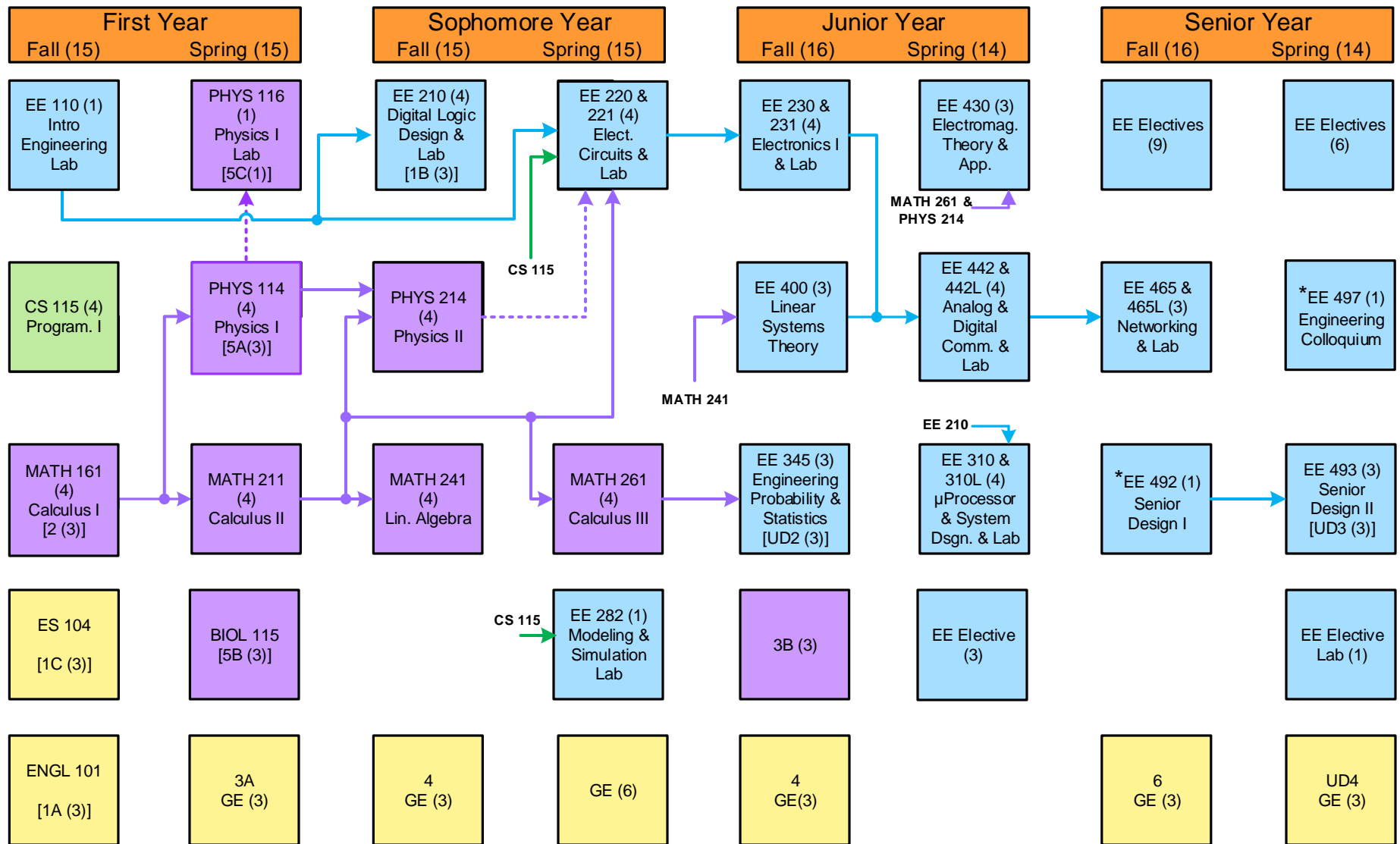


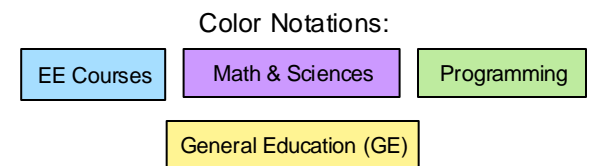
# Four-Year BSEE Program Roadmap (Catalog Terms Fall 25 & Later)



4-Year Roadmap Fall 25

An arrow with solid line indicates a prerequisite, while an arrow with dotted line indicates a corequisite. Numbers in parentheses indicate semester units (credit hours). For example, "MATH 161 (4) Calculus I [2 (3)]" indicates a 4-unit course, with 3 units applied to GE area 2. All EE courses require a "C" or better, while the supporting courses (CS, MATH, & Sciences) require a "C-" or better.

\*Prerequisite: Completion of all lower division (100 & 200) EE courses and a minimum of 16 units upper division (300 & 400) EE courses.



04/04/2025